

迴轉機械預兆診斷系統

Prognosis Monitoring System, PMS

簡介 Introductions

- 預兆診斷系統可廣泛應用於迴轉機械設備，並可自動執行狀態分析及預測，彌補定期維護或巡檢無法即時掌握運轉中異常之不足，發揮預測維護的價值。
- The Prognosis Monitoring System (PMS) can be widely used in rotary machineries to automatically perform health analysis and prediction, so as to make up for the deficiencies of time-based maintenance and field inspections, and play the value of predictive maintenance.

特色與創新 Characters and Innovations

- 以三大核心功能達成監測即時化、維護預測化、診斷智能化。
- 健康狀態監測：以基於ISO標準或自行建模之健康度指標，即時、快速掌握設備健康狀態。
- 健康趨勢預測：有效預測健康度衰退趨勢，最佳化停機維護排程、保持良好稼動率。
- 故障診斷：準確鑑別零組件故障類型，減少維護作業所需時間、加快回到製程應用。
- Automatic analysis for predictive maintenance.
- Using a health indicator for effective evaluation and real-time monitoring of the machine health status.
- Can predict possible changes of the health indicator so as to prevent unwanted downtime.
- Accurately and automatically diagnose damaged parts/components, shorten the time to repair.

應用與效益 Applications and Benefits

- 即時監控、有效預測、準確診斷，維護作業事半功倍。
- 可廣泛應用於金屬加工、半導體設備、石化廠務設備、電廠/綠能機械等領域之迴轉機械設備。
- An efficient solution that facilitates maintenance works.
- Applications: metal machining, plant equipment of semiconductor and petrochemical industries, etc..

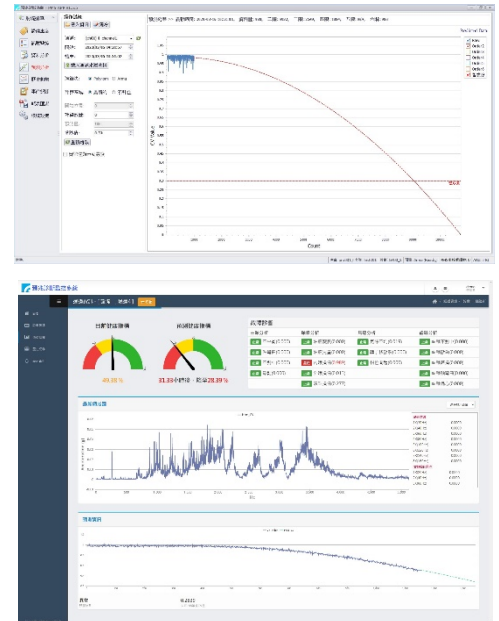
聯絡 contact

王俊傑 Chun-Chieh Wang

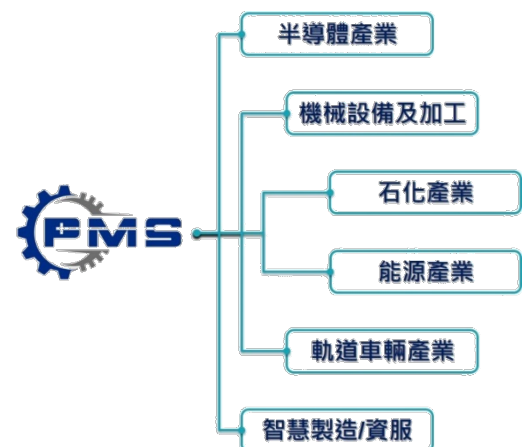
TEL:886-3-5915867

FAX:886-3-5826554

E-mail: chunchiehwang@itri.org.tw



中控版/Web版預兆診斷管理介面
(Prognosis Monitoring System, PMS)



預兆診斷系統應用實績領域
(Practical application fields of PMS)