



## CHROMA I-LEARNING MODEL 98019-LN

### Instant learning, fast mastery

During the process of introducing MES into the company, our continuous focus is on the effective use of the software by all personnel.

Chroma i-Learning provides comprehensive training courses for the functions and operation of each software module. The online learning platform creates training plans for all levels of personnel for them to learn effectively, regardless of geographical or other constraints. The complete online test functionality ensures the successful use and implementation of the technology throughout the entire enterprise.

Whether it is for personnel on the production line, or for equipment

maintenance and calibration, and whether the company already has integrated or plans to introduce Sajat MES, Chroma i-Learning will ensure that teams and entire enterprises are effectively trained in the MES technology.

Core learning audiences:

- **Management staff**  
Instant checks of individual learning processes
- **QA staff**  
Modules related to QA (quality assurance)
- **Production line staff**  
Processes for system operation
- **Information staff**  
Software development and maintenance training

## MODEL 98019-LN

### Key Features

- Online video learning at any time
- Learning plans for each staff position
- Online test and certification system
- Certification binding to MES operation permission
- Certification binding to HR assessment system
- Complete connection with routine equipment maintenance and calibration

### Functions

- Personalized training course data
- Individual learning plans development
- Instant annotation to each video node
- Video exam questions
- Online discussion area
- Instant query of individual learning reports
- Organization nodes in learning plans
- Role decentralization management

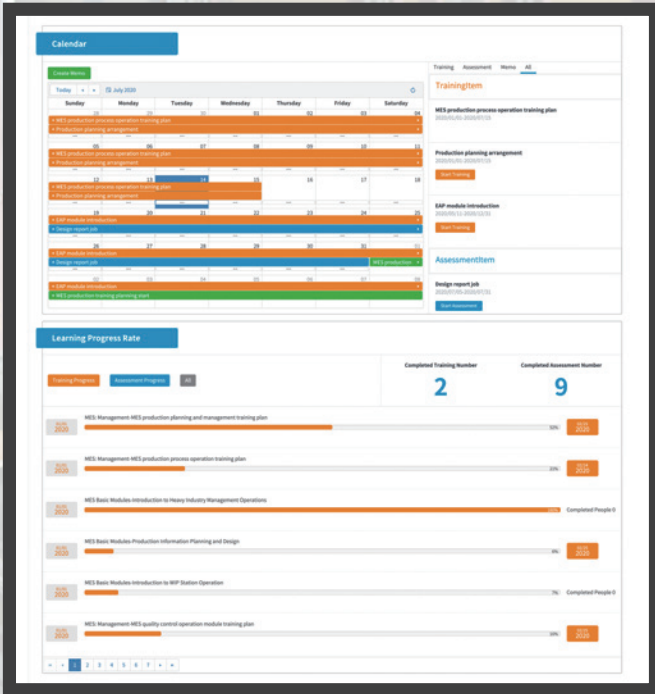


**Chroma**

# Digital learning to reduce time and labor costs

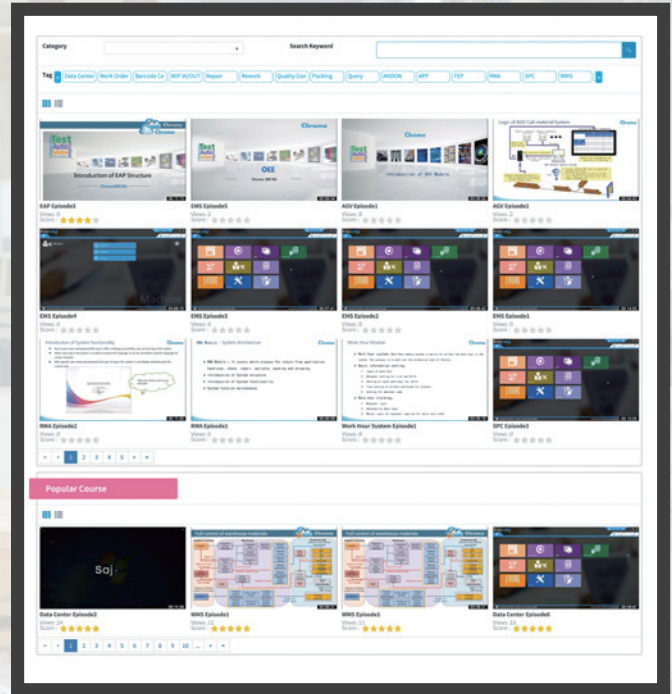
## Personal calendar · Control over learning plan

The clear interface automatically imports learning plans for each software module into the personal calendar, and so gives clear control over the learning process.



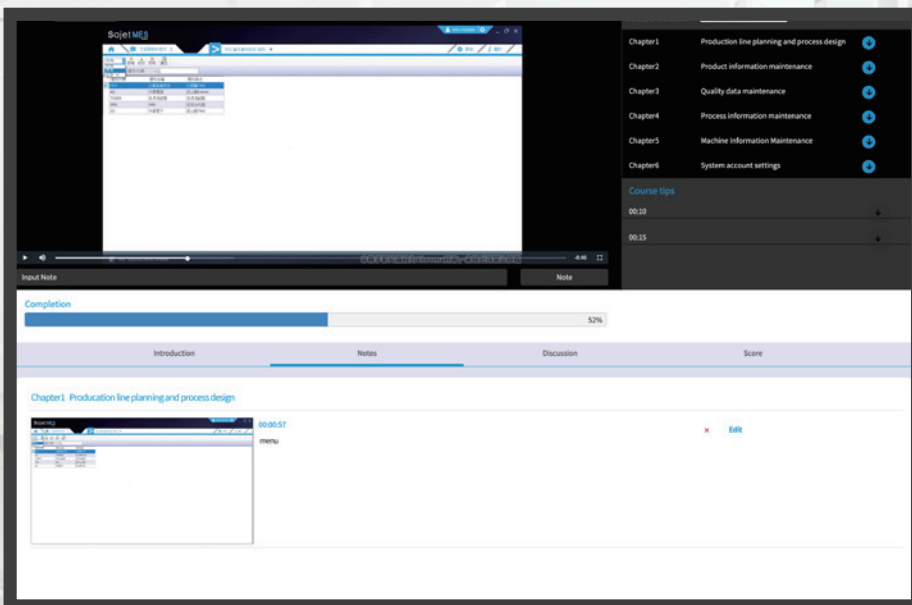
## Abundant videos · Flexible independent learning

In addition to course videos, students can also refer to videos of Sagnet MES modules and peripheral systems as needed.



## Instant annotation · Deepen effective understanding

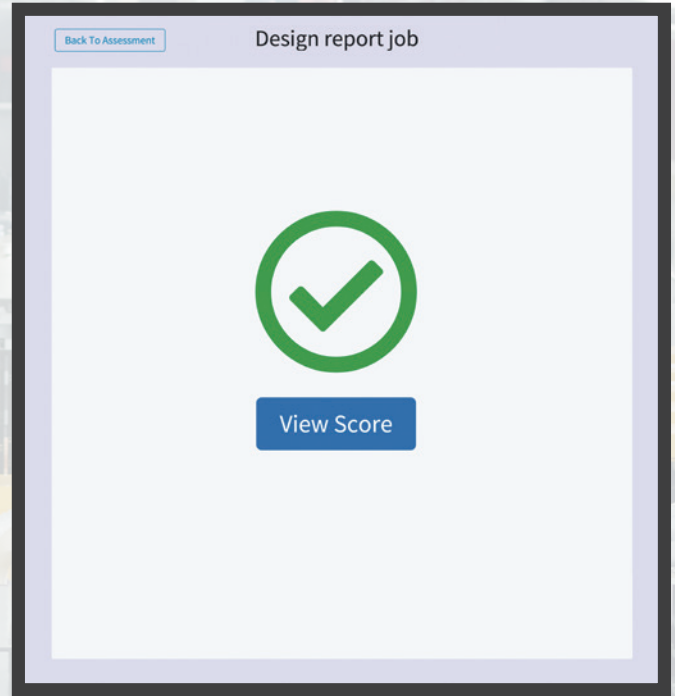
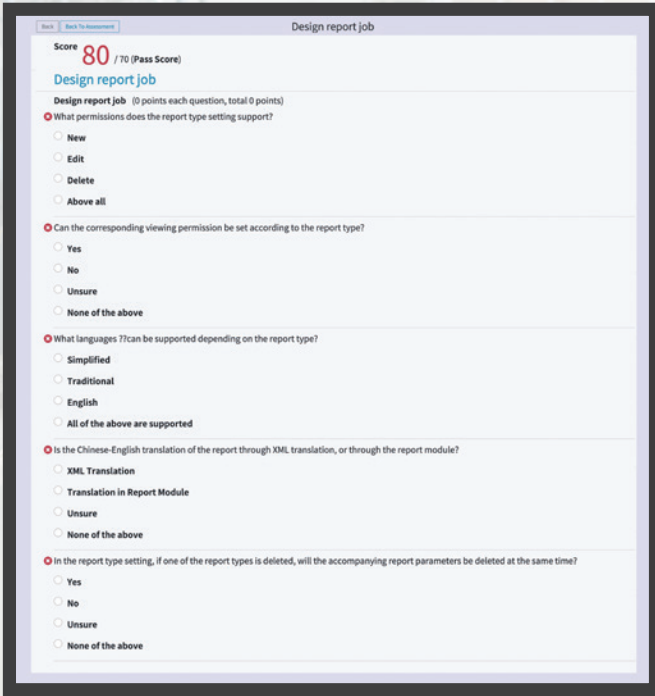
The built-in course note functions in the videos make it easy for students to review the course content.



# Inspect learning results and integrate into MES & HR systems

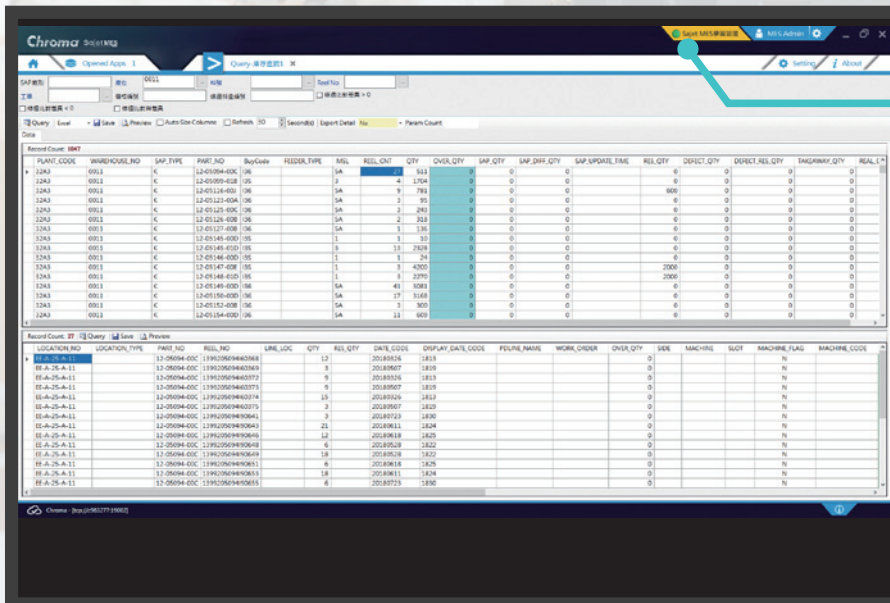
## Online testing · Abundance of test questions

The rich test item bank offers a wide variety of online questions and multimedia quizzes (with video), a quick response to learning results, and instant test results.



## Certificate issuance · Binding MES review

Based on the test results, the system automatically reviews and connects with the MES system, to ensure that the staff can actually operate on the production line.



# Convenient and online control over training progress

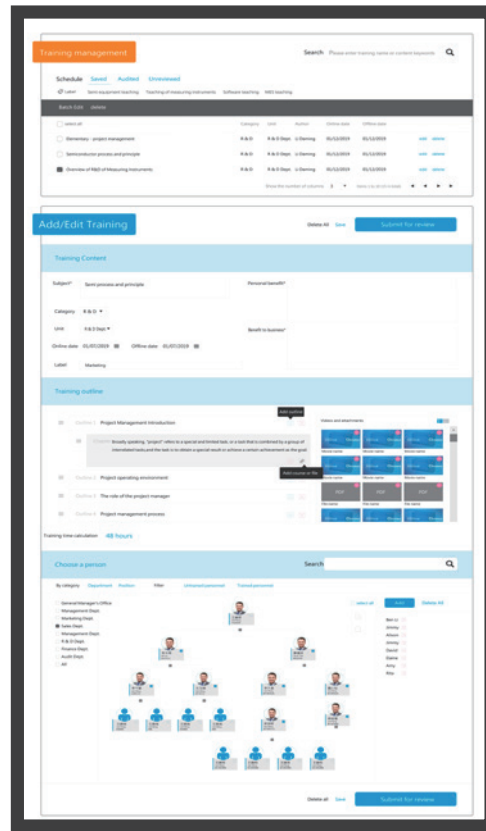
## Supervisor homepage · Learners' information at a glance

After importing i-Learning, the webpage offers managers an easy overview and real-time grasp of the students' learning progress, showing statistical data such as training plans, test results, etc.




## Training plans · Flexible organization of applications


Managers can formulate organizational nodes of each student's learning plan, according to individual training needs and the overall course organization.




Get more product & distributor information in Chroma ATE APP



iOS





Android

Search Keyword

98019-LN

**HEADQUARTERS**  
**CHROMA ATE INC.**  
 66 Huaya 1st Road,  
 Guishan, Taoyuan  
 33383, Taiwan  
 T +886-3-327-9999  
 F +886-3-327-8898  
 www.chromaate.com  
 info@chromaate.com

**U.S.A.**  
**CHROMA ATE, INC.**  
 (U.S.A.)  
 7 Chrysler, Irvine,  
 CA 92618  
 T +1-949-421-0355  
 F +1-949-421-0353  
 Toll Free  
 +1-800-478-2026  
 www.chroma.us.com  
 info@chromaus.com

**CHROMA SYSTEMS**  
**SOLUTIONS, INC.**  
 19772 Pauling,  
 Foothill Ranch,  
 CA 92610  
 T +1-949-600-6400  
 F +1-949-600-6401  
 www.chroma.usa.com  
 sales@chromausa.com

**EUROPE**  
**CHROMA ATE EUROPE B.V.**  
 Morsestraat 32, 6716 AH  
 Ede, The Netherlands  
 T +31-318-648282  
 F +31-318-648288  
 www.chroma.eu.com  
 salesnl@chromaeu.com

**CHROMA GERMANY GMBH**  
 Südtiroler Str. 9, 86165,  
 Augsburg, Germany  
 T +49-821-790967-0  
 F +49-821-790967-600  
 www.chroma.eu.com  
 salesde@chromaeu.com

**JAPAN**  
**CHROMA JAPAN**  
**CORP.**  
 888 Nippa-cho,  
 Kouhoku-ku,  
 Yokohama-shi,  
 Kanagawa,  
 223-0057 Japan  
 T +81-45-542-1118  
 F +81-45-542-1080  
 www.chroma.co.jp  
 info@chroma.co.jp

**KOREA**  
**CHROMA ATE**  
**KOREA BRANCH**  
 3F Richtogether  
 Center, 14,  
 Pangyoyeok-ro 192,  
 Bundang-gu,  
 Seongnam-si,  
 Gyeonggi-do  
 13524, Korea  
 T +82-31-781-1025  
 F +82-31-8017-6614  
 www.chromaate.co.kr  
 info@chromaate.com

**CHINA**  
**Sajet System Technology**  
 (Suzhou) Co., Ltd.  
 503-1, 4F, Genway  
 LOHASTOWN,  
 88 Building, 999  
 Xinghu Road,  
 SIP Suzhou  
 T +86-512-6807-1889  
 F +86-512-6807-1886  
 www.chroma.com.cn  
 info@chromaate.com

**SOUTHEAST ASIA**  
**QUANTEL PTE LTD.**  
 (A company of Chroma Group)  
 25 Kallang Avenue #05-02  
 Singapore 339416  
 T +65-6745-3200  
 F +65-6745-9764  
 www.quantel-global.com  
 sales@quantel-global.com